

INSTALLATION MANUAL:

COR-1409200

JEEP WRANGLER 3" REAR BUMP STOPS (2018+, JL)



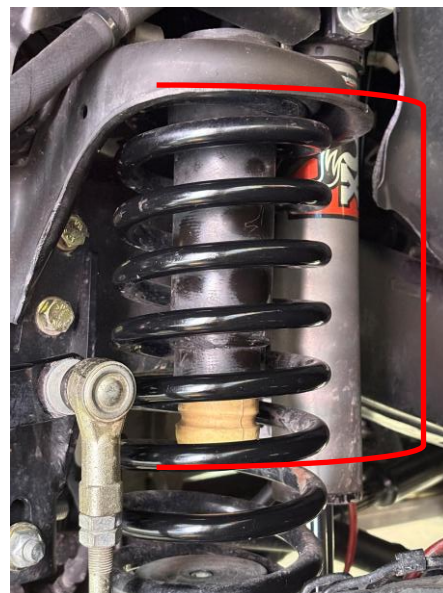
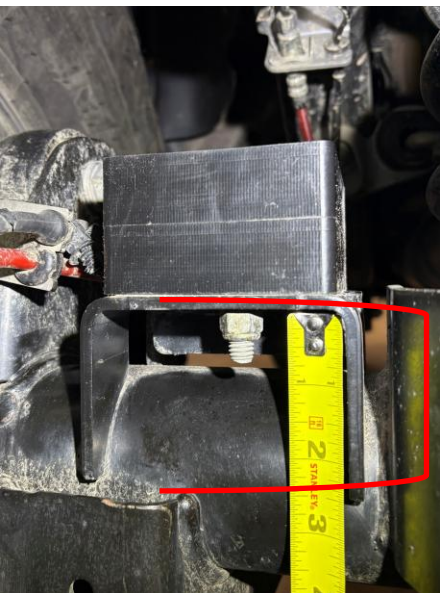
REV: A | DATE: 04/30/2026 | AUTH: KW13

ATTENTION XR OWNERS

Jeep XR and 392 models feature taller/longer front and rear bump stops from factory.

REAR

FRONT



Tall Bump Stop Pad
on XR/392 JL's

Short Bump Stop Pad
on "Standard" JL's

Tall Bump Stop Tower
on XR/392 JL's

Short Bump Stop Tower
on "Standard" JL's

XR/392 models need to swap to shorter FRONT AND REAR bump stop extensions.

Short Rear Extension : COR-1409201

Short Front Extension: COR-1409101

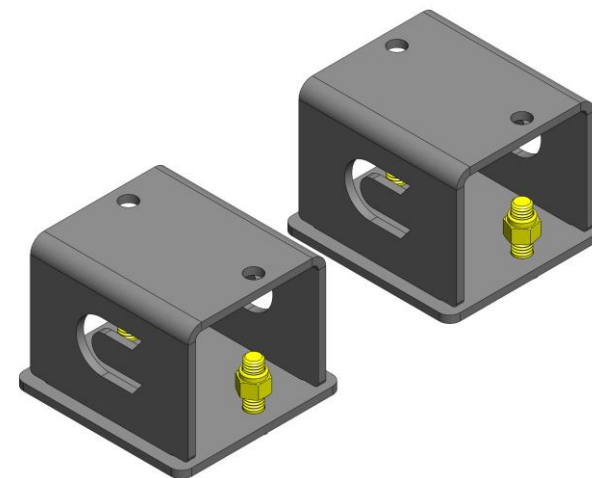
INCLUDED ITEMS

1409200 Jeep Wrangler 3" Rear Bump Stops - (2018+, JL)			
QTY	Part Number	Description	Class/Grade
2	1409200	Jeep Wrangler 3" Rear Bump Stops	N/A
4	15105	3/8"-16 x 1" Yellow Zinc Finish SAE J429 Hex Cap Screw	Grade 8
4	37185	3/8"-16 Yellow Zinc Finish Nylon Insert Lock Nut	Grade 8

Product Notes and Features:

The Jeep Rear Bump Stops for Wrangler JL 2018+ are designed to limit suspension compression. Using these extensions prevents damage to your suspension components when tackling rugged terrain, specifically during a "bottom-out" driving condition.

- For use in the rear bump stop location of the JL Wrangler
- Designed to meet the demands of rugged terrain and daily driving
- Included Grade 8 hardware with a corrosion-resistant finish
- Mounts outside of the coil on the OEM spring pad, no spring removal required
- Designed to be compatible with our spacer kit (COR-1409201) for even more up travel tuning
- Provides vehicle with 3" of fixed bump stop over-compression protection



INSTALLATION INSTRUCTIONS

TOOLS REQUIRED FOR INSTALLATION

- Basic hand tools
- Standard sockets and wrenches 9/16"

*****Take this product to a licensed professional if you are hesitant about the installation process!*****

1. Locate the bump stop perch next to the rear spring on the axle. The bump stops bolt directly into the mount using the supplied countersunk hardware and Nylock nut.

Locate the holes on the top of the bump stop perch. Align the holes in the bump stop and use the supplied 3/8" countersunk hardware and locknuts to fasten the extension to the perch.



Figure 1: Extension located on bump stop perch with bolts dropped in holes

INSTALLATION INSTRUCTIONS

2. Complete Step 1 for both sides of the rear axle. Cycle the suspension to full-flex and determine if more, or less bump stop extension is needed. Save the additional countersunk bolts if you require more bump stop extensions in the future.



Figure 2: Bump stop installed with supplied hardware

INSTALLATION INSTRUCTIONS

3. The installation is complete. Please ensure that both bolts holding the extensions to the bump stop perch are tightened down. Follow the post-installation checklist below before driving the vehicle. Note that for more bump stop, COR-1409201 is directly compatible (simply bolt on the required number of spacers using the supplied hardware from that kit).

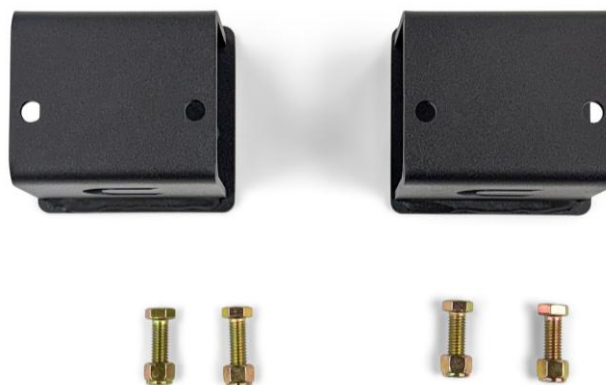


Figure 3: Bump stops and hardware

POST-INSTALLATION CHECKLIST:

- Hardware torqued to 30 ft-lbs, or until spacer begins to bulge
- Required amount of bump stop is achieved, and suspension up-travel is properly limited

