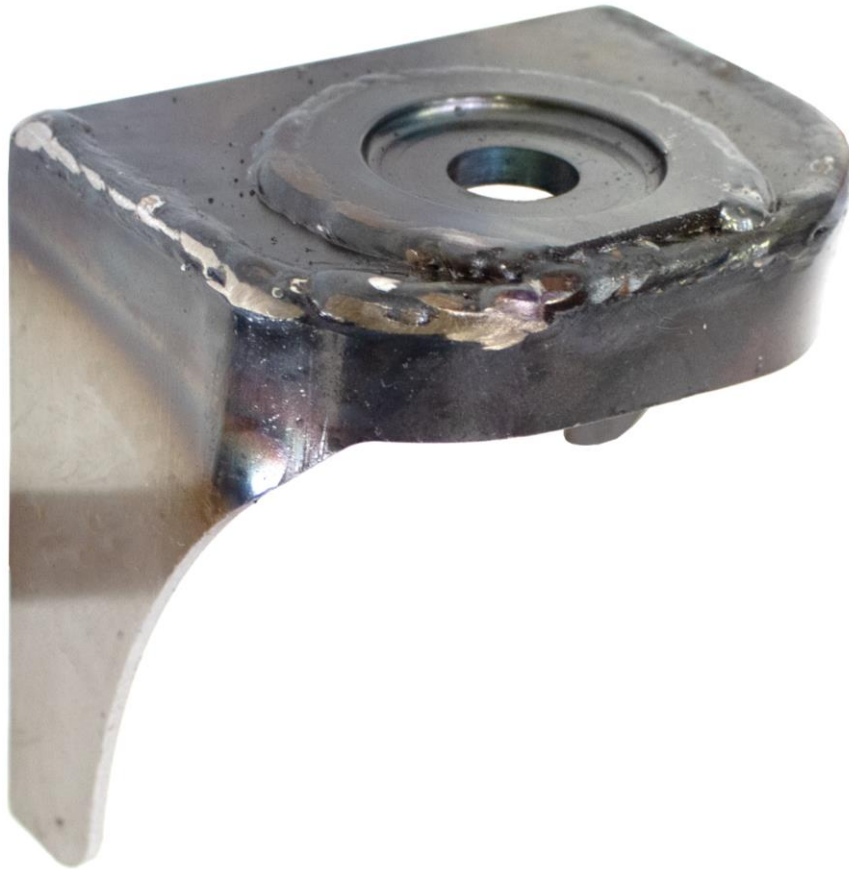




# RUST BUSTER

**RB7135**  
**Rear Shock Mount**  
**2005-2015 Toyota Tacoma**  
**Crew Cab & Extended Cab**



### **REQUIRED TOOLS**

Jack Stands or Lift  
Mig Welder  
Paint/Primer  
Hand Grinder  
Cutting Wheel or Torch  
Welding Gloves  
Welding Hood/Shield  
Ear & Eye Protection  
Fire Extinguisher  
Hammer

### **KIT CONTAINS**

Rear Shock Mount

### **QTY**

1



# RUST BUSTER

## RB7135 Rear Shock Mount 2005-2015 Toyota Tacoma Crew Cab & Extended Cab

### 1) PREPARING YOUR VEHICLE

Begin by disconnecting your battery prior to starting your installation.

Inspect your vehicle for leaking fuel lines, fuel tank and engine components. If you have fuel leaks repair all leaks prior to starting your installation. If your fuel tank is near your welding area **remove your tank prior to welding.**

Remove all combustible items above the work area such as seats, carpets, padding, etc.

**Keep all flammable materials away from the vehicle work area.**

### 2) PREPARING YOUR WORKSTATION

Keep a fire extinguisher close by in the case of fire and make sure you always have a designated "Fire Watch" to assist during the cutting or welding phases.

Abide by all apprenticed welding safety standards and practices.

Always use appropriate welding eye protection, ear protection, and work and fire safety gloves during the installation and within the work area.



### WARNING!

If you are unsure on how to perform the installation or how to operate any of the required tools listed above, it is **HIGHLY** advised that you enlist the work of a certified welder/installer.

Failure to follow proper safety precautions and instructions may result in serious injury. **The user assumes all liability when installing the product.**

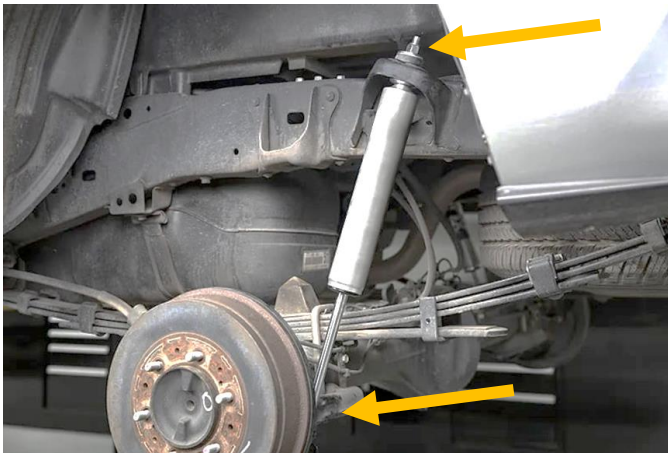


# RUST BUSTER

## RB7135 Rear Shock Mount 2005-2015 Toyota Tacoma Crew Cab & Extended Cab

### 3) PREPARING FOR YOUR INSTALL

Lift up your vehicle. Remove the bolts and nuts retaining your shock. You will need a 19mm socket to remove the nut on the top and a 17mm socket and wrench for the nut and bolt on the bottom.



### 4) CUT

Cut off your factory shock mount and any obstructions in the work area.



Grind the frame free of rust and debris, revealing bare metal.



Paint the work area with a weld through primer to help prevent against rust development.



### 5) WELD

Hold your replacement rear shock mount up to the frame using the factory parts silhouette to help with the alignment.





# RUST BUSTER

## RB7135 Rear Shock Mount 2005-2015 Toyota Tacoma Crew Cab & Extended Cab

Once in place, tack weld your part onto the frame before welding it on fully. Weld 100% around all edges.



### 6) **PAINT**

Paint the part with primer or other rust inhibitor to help prevent or reduce the risk of rust formation.

We recommend our Rust Buster Rust Converter & Primer Spray Paint (RB9917).



### 7) **REINSTALL**

Reinstall your shock with a 17mm and 19mm socket and wrench.