



RUST BUSTER

RB7426L & RB7426R
Center Frame Section
2007-2014 Chevy Tahoe,
GMC Yukon, & Cadillac Escalade



REQUIRED TOOLS

Jack Stands or Lift
Mig Welder
Paint/Primer
Hand Grinder
Cutting Wheel or Torch
Welding Gloves
Welding Hood/Shield
Ear & Eye Protection
Sockets & Ratchet
Fire Extinguisher
Chalk or Paint Marker
Tape Measure
Hammer
C-Clamp

KIT CONTAINS

Center Frame Section
M14 Hex Head Screw
M14 Nylok Nut
M14 Washer

QTY

1
1
1
2



RUST BUSTER

RB7426L & RB7426R Center Frame Section 2007-2014 Chevy Tahoe, GMC Yukon, & Cadillac Escalade

1) PREPARING YOUR VEHICLE

Begin by disconnecting your battery prior to starting your installation.

Inspect your vehicle for leaking fuel lines, fuel tank and engine components. If you have fuel leaks repair all leaks prior to starting your installation. If your fuel tank is near your welding area **remove your tank prior to welding.**

Remove all combustible items above the work area such as seats, carpets, padding, etc.

Keep all flammable materials away from the vehicle work area.

2) PREPARING YOUR WORKSTATION

Keep a fire extinguisher close by in the case of fire and make sure you always have a designated "Fire Watch" to assist during the cutting or welding phases.

Abide by all apprenticed welding safety standards and practices.

Always use appropriate welding eye protection, ear protection, and work and fire safety gloves during the installation and within the work area.



WARNING!

If you are unsure on how to perform the installation or how to operate any of the required tools listed above, it is **HIGHLY** advised that you enlist the work of a certified welder/installer.

Failure to follow proper safety precautions and instructions may result in serious injury. **The user assumes all liability when installing the product.**



RUST BUSTER

RB7426L & RB7426R Center Frame Section 2007-2014 Chevy Tahoe, GMC Yukon, & Cadillac Escalade

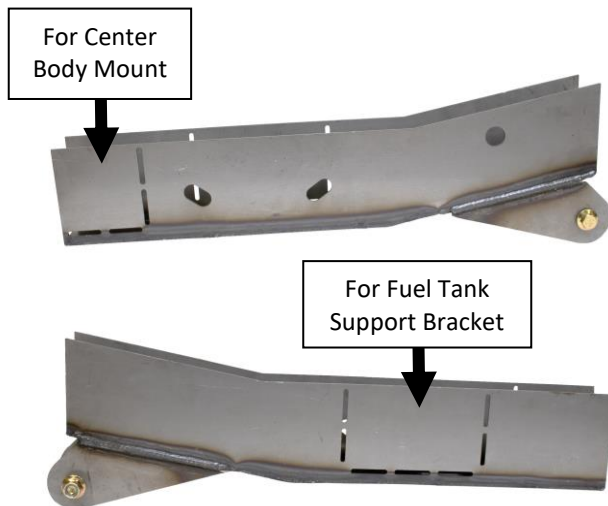
3) PREPARING FOR YOUR INSTALL

Lift up your vehicle. Remove any lines or power harnesses from the work area.

Remove the bolt retaining your leaf spring with a 22mm socket and wrench.

CUT

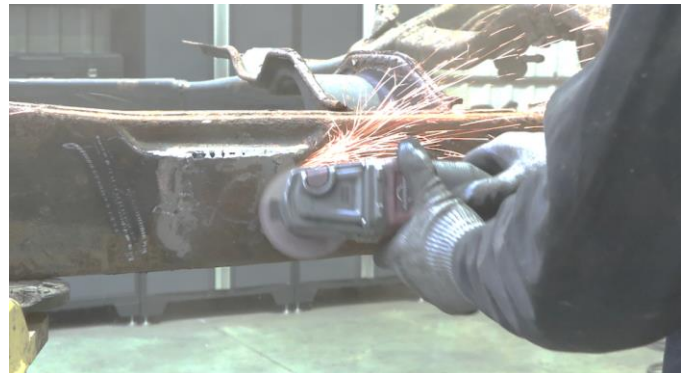
Our part features two perforated plates you can remove to fit over your center body mount and fuel tank support bracket. If you decide to keep your mounts, remove the plates at this time. If not, remove your center body mount and fuel tank support bracket.



Cut off your leaf spring bracket.



Grind the frame free of rust and debris, revealing bare metal.



Paint the part with a weld-through primer to help prevent against rust development





RUST BUSTER

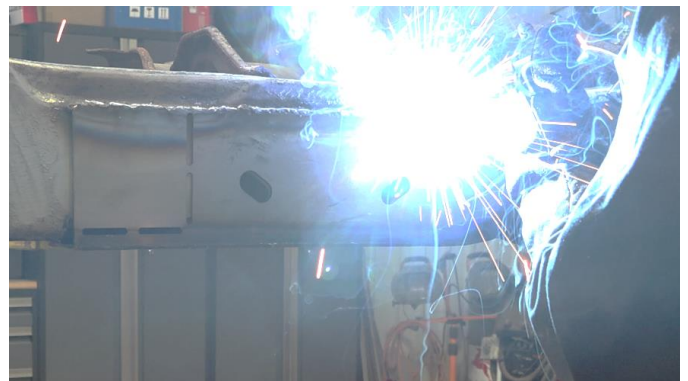
RB7426L & RB7426R Center Frame Section 2007-2014 Chevy Tahoe, GMC Yukon, & Cadillac Escalade

Draw a line approximately 5/16" to a 1/2 inch above the bottom of the frame and cut along it.



C-clamp your part into place to ensure a tight fit.

Following proper welding procedures, tack weld you're your center frame section onto the frame before welding the part on fully. Weld 100% around all edges.



5) REINSTALL

If you removed your center body mount or fuel tank support bracket, we show you how to reinstall it with our installation videos on our YouTube channel:

- Center Body Mount Installation Video - RB7418
- Fuel Tank Support Bracket Installation Video - RB7411

Reinstall your leaf spring with a 22mm socket and wrench.

4) WELD

Slide your center frame section onto the frame and tap it into place using a hammer. Use the frame holes to help with the alignment.





RUST BUSTER

RB7426L & RB7426R Center Frame Section 2007-2014 Chevy Tahoe, GMC Yukon, & Cadillac Escalade

6) **PAINT AND PROTECT**

Paint the part with primer or other rust inhibitor to help prevent or reduce the risk of rust formation.

We recommend our Rust Buster Rust Converter & Primer Spray Paint (RB9917).

