

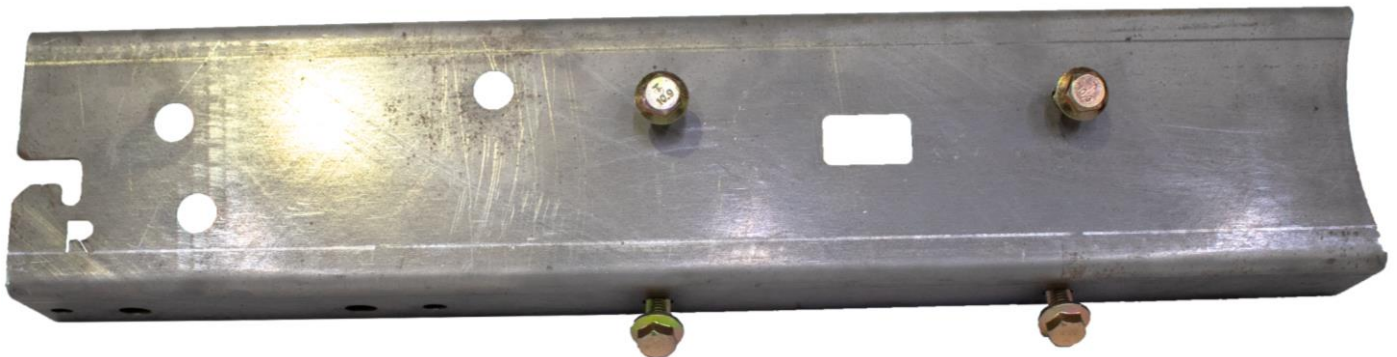


# RUST BUSTER

## RB7126L & RB7126R Rear Frame Section 2005-2015 Toyota Tacoma Crew Cab & Extended Cab



VIDEO AVAILABLE



### REQUIRED TOOLS

Jack Stands or Lift  
Mig Welder  
Paint/Primer  
Hand Grinder  
Cutting Wheel or Torch  
Welding Gloves  
Welding Hood/Shield  
Ear & Eye Protection  
Sockets & Ratchet  
Fire Extinguisher

### KIT CONTAINS

Rear Frame Section  
M10 Flanged Hex Screw  
M10 Insert Flange Locknut

### QTY

1  
4  
4



# RUST BUSTER

## RB7126L & RB7126R Rear Frame Section 2005-2015 Toyota Tacoma Crew Cab & Extended Cab

### 1) PREPARING YOUR VEHICLE

Begin by disconnecting your battery prior to starting your installation.

Inspect your vehicle for leaking fuel lines, fuel tank and engine components. If you have fuel leaks repair all leaks prior to starting your installation. If your fuel tank is near your welding area **remove your tank prior to welding.**

Remove all combustible items above the work area such as seats, carpets, padding, etc.

**Keep all flammable materials away from the vehicle work area.**

### 2) PREPARING YOUR WORKSTATION

Keep a fire extinguisher close by in the case of fire and make sure you always have a designated "Fire Watch" to assist during the cutting or welding phases.

Abide by all apprenticed welding safety standards and practices.

Always use appropriate welding eye protection, ear protection, and work and fire safety gloves during the installation and within the work area.



**WARNING!**

If you are unsure on how to perform the installation or how to operate any of the required tools listed above, it is **HIGHLY** advised that you enlist the work of a certified welder/installer.

Failure to follow proper safety precautions and instructions may result in serious injury. **The user assumes all liability when installing the product.**



# RUST BUSTER

## RB7126L & RB7126R Rear Frame Section 2005-2015 Toyota Tacoma Crew Cab & Extended Cab

### 3) PREPARING FOR YOUR INSTALL

Lift up your vehicle. Remove any lines or power harnesses in your work area.

To release the leaf spring hanger, remove the rivets on the side of your frame. There will be two on the side and two on the bottom of your frame.

Remove the single bolt holding the spare tire crossmember in place.

Using a grinder, clean the frame free of rust and debris, revealing bare metal.

Spray the work area with a weldable primer to help prevent against rust development.

### 4) WELD

Slide your rear frame section into place using the frame holes to help with the alignment.



Following proper welding procedures, tack weld the part onto the frame before welding the part on fully. Weld 100% around all edges.



### 5) REINSTALL

Using the included M10 hardware, reinstall your leaf spring hanger using a 14mm socket and 15mm wrench.

### 6) PAINT

Paint the part with primer or other rust inhibitor to help prevent or reduce the risk of rust formation.

We recommend our Rust Buster Rust Converter & Primer Spray Paint (RB9917).

