



RUST BUSTER

RB8423

**2003-2009 Toyota® 4Runner
2007-2014 Toyota® FJ Cruiser
Rear Hitch Crossmember**



VIDEO AVAILABLE



REQUIRED TOOLS

Jack Stands or Lift
Mig Welder
Paint/Primer
Hand Grinder
Cutting Wheel or Torch
Welding Gloves
Welding Hood/Shield
Ear & Eye Protection
Sockets & Ratchet
Fire Extinguisher

KIT CONTAINS

Rear Hitch Crossmember

QTY

1



RUST BUSTER

RB8423

2003-2009 Toyota® 4Runner
2007-2014 Toyota® FJ Cruiser
Rear Hitch Crossmember

1) PREPARING YOUR VEHICLE

Begin by disconnecting your battery prior to starting your installation.

Inspect your vehicle for leaking fuel lines, fuel tank and engine components. If you have fuel leaks repair all leaks prior to starting your installation. If your fuel tank is near your welding area **remove your tank prior to welding.**

Remove all combustible items above the work area such as seats, carpets, padding, etc.

Keep all flammable materials away from the vehicle work area.

2) PREPARING YOUR WORKSTATION

Keep a fire extinguisher close by in the case of fire and make sure you always have a designated "Fire Watch" to assist during the cutting or welding phases.

Abide by all apprenticed welding safety standards and practices.

Always use appropriate welding eye protection, ear protection, and work and fire safety gloves during the installation and within the work area.



WARNING!

If you are unsure on how to perform the installation or how to operate any of the required tools listed above, it is **HIGHLY** advised that you enlist the work of a certified welder/installer.

Failure to follow proper safety precautions and instructions may result in serious injury. **The user assumes all liability when installing the product.**



RUST BUSTER

RB8423

2003-2009 Toyota® 4Runner 2007-2014 Toyota® FJ Cruiser Rear Hitch Crossmember

3) CUT

Remove the old rear hitch crossmember.



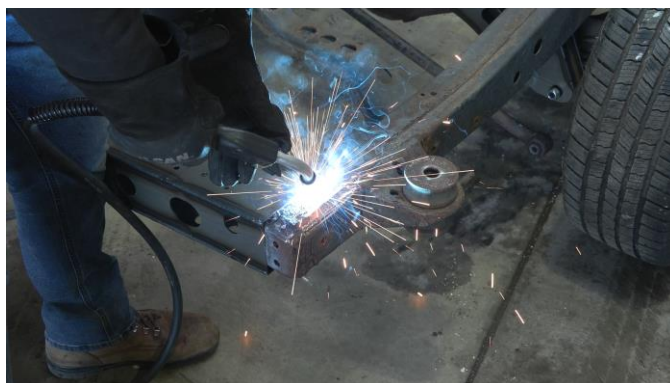
Grind down the frame free of rust and debris, revealing bare metal.

(OPTIONAL) Paint the part and work area with a weldable primer to help prevent against rust.



4) WELD

Remove any remaining potential fire hazards on both the vehicle and surrounding area. Following proper welding procedures. The top side will have round holes while the bottom will have oval holes. 100% weld around all edges.



5) PAINT AND PROTECT

If you chose not to protect you part in (Step 3), coat the part and work area with a primer or other rust inhibitor to help prevent or reduce the risk of rust formation.

