



RUST BUSTER

RB8432R & RB8432L Rear Frame Section 2007-2014 Toyota FJ Cruiser



REQUIRED TOOLS

Jack Stands or Lift
Mig Welder
Paint/Primer
Hand Grinder
Cutting Wheel or Torch
Welding Gloves
Welding Hood/Shield
Ear & Eye Protection
Sockets & Ratchet
Fire Extinguisher

KIT CONTAINS

Rear Frame Section
M12 Flanged Hex Bolt

QTY

1
2



RUST BUSTER

RB8432R & RB8432L Rear Frame Section 2007-2014 Toyota FJ Cruiser

1) PREPARING YOUR VEHICLE

Begin by disconnecting your battery prior to starting your installation.

Inspect your vehicle for leaking fuel lines, fuel tank and engine components. If you have fuel leaks repair all leaks prior to starting your installation. If your fuel tank is near your welding area **remove your tank prior to welding.**

Remove all combustible items above the work area such as seats, carpets, padding, etc.

Keep all flammable materials away from the vehicle work area.

2) PREPARING YOUR WORKSTATION

Keep a fire extinguisher close by in the case of fire and make sure you always have a designated "Fire Watch" to assist during the cutting or welding phases.

Abide by all apprenticed welding safety standards and practices.

Always use appropriate welding eye protection, ear protection, and work and fire safety gloves during the installation and within the work area.



WARNING!

If you are unsure on how to perform the installation or how to operate any of the required tools listed above, it is **HIGHLY** advised that you enlist the work of a certified welder/installer.

Failure to follow proper safety precautions and instructions may result in serious injury. **The user assumes all liability when installing the product.**

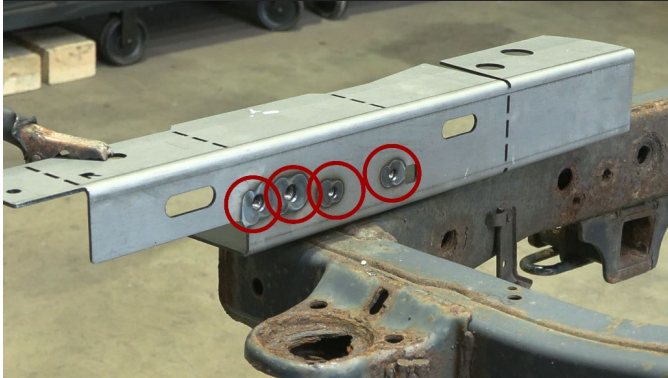


RUST BUSTER

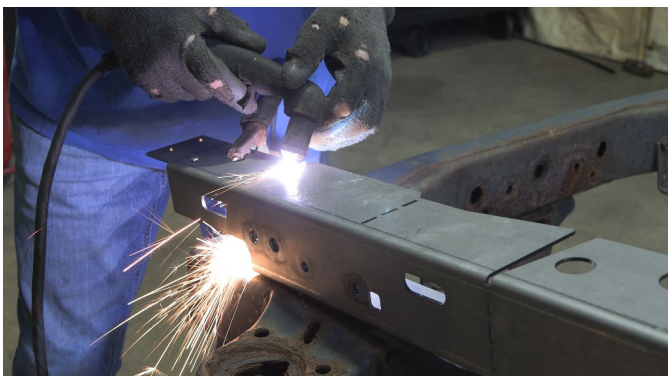
RB8432R & RB8432L Rear Frame Section 2007-2014 Toyota FJ Cruiser

3) PREPARING FOR YOUR INSTALL

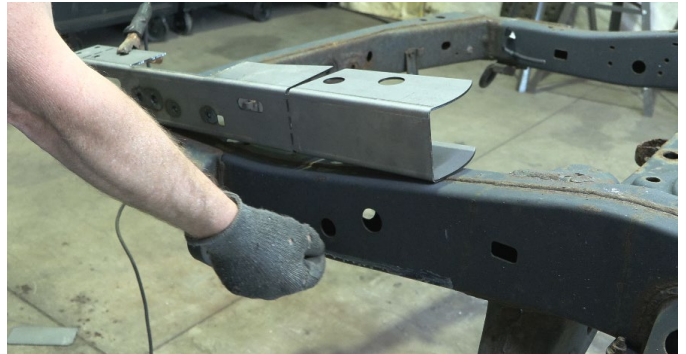
Uninstall the vehicle's tow hooks at this time as our part supplies new mounting points.



Our part features a perforated plate that can be removed if you wish to retain your rear body mount.

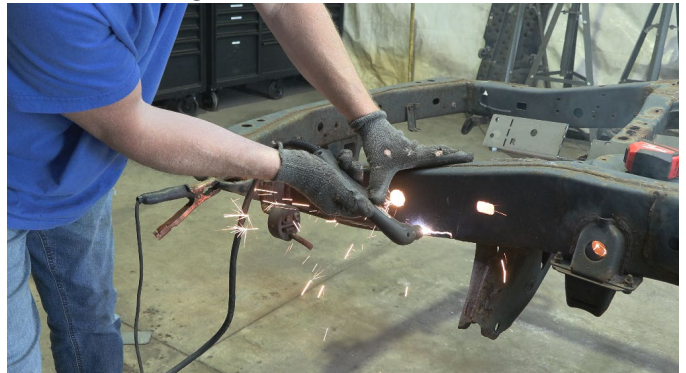


Hold the part up to the frame and mark off its coverage. Draw a cut line about 3/4th of an inch from the bottom of the frame. Ensure you remove any lines or power harnesses from the work area before continuing.



CUT

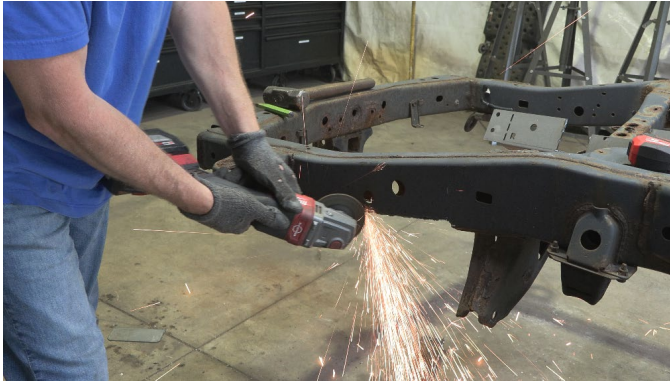
Begin cutting along your drawn line, followed by cleaning and grinding the frame free from rust and debris, revealing bare metal.





RUST BUSTER

RB8432R & RB8432L Rear Frame Section 2007-2014 Toyota FJ Cruiser



Spray the work area with a weldable primer to help prevent against rust development.

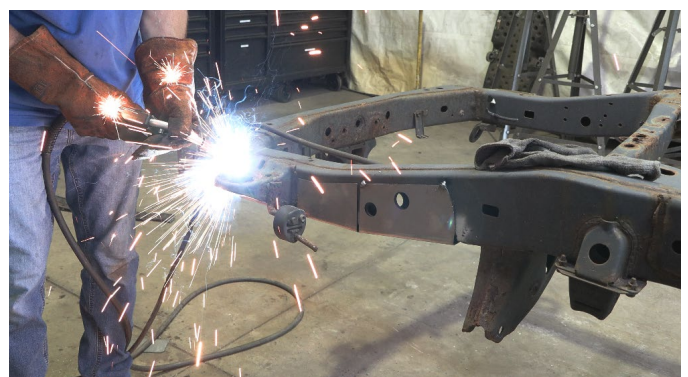


Followed by pushing the rear section up and aligning that area's frame holes, and tac welding it.



4) **WELD**

Push the part onto the frame while using the frames holes to help with alignment. Line up the first two holes and tac weld that area into place.





RUST BUSTER

RB8432R & RB8432L Rear Frame Section 2007-2014 Toyota FJ Cruiser

The rear perforated section allows it to be bent around the rear section. Hammer it flush and weld it to the face.

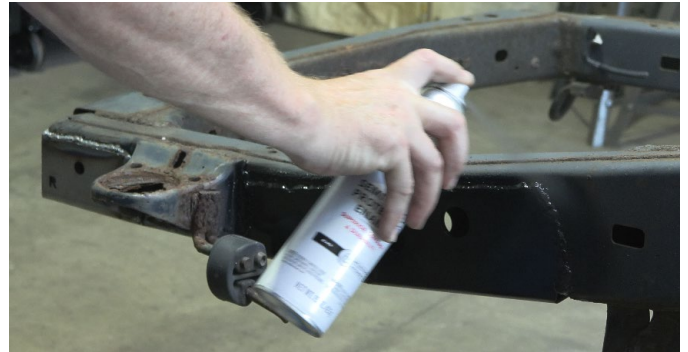


Remove any potential fire hazards from the work area. Following proper welding procedures, tack weld the part onto the frame before welding it on fully. Weld 100% around all edges.



5) **PAINT AND PROTECT**

Coat the part and work area with a primer or other rust inhibitor to help prevent or reduce the risk of rust formation.



6) **REINSTALL**

Finally, reinstall your tow hooks.