



RUST BUSTER

RB7616 Fuel Tank Support Bracket 1994-2004 Chevy/GMC S10/Sonoma



REQUIRED TOOLS

Jack Stands or Lift
Mig Welder
Paint/Primer
Hand Grinder
Cutting Wheel or Torch
Welding Gloves
Welding Hood/Shield
Ear & Eye Protection
Sockets & Ratchet
Fire Extinguisher

KIT CONTAINS

Fuel Tank Support Bracket
M12 Flanged Hex Bolt
M12 Flanged Nyloc Nut

QTY

1
4
4



RUST BUSTER

RB7616

**Fuel Tank Support Bracket
1994-2004 Chevy/GMC S10/Sonoma**

1) PREPARING YOUR VEHICLE

Begin by disconnecting your battery prior to starting your installation.

Inspect your vehicle for leaking fuel lines, fuel tank and engine components. If you have fuel leaks repair all leaks prior to starting your installation. If your fuel tank is near your welding area **remove your tank prior to welding.**

Remove all combustible items above the work area such as seats, carpets, padding, etc.

Keep all flammable materials away from the vehicle work area.

2) PREPARING YOUR WORKSTATION

Keep a fire extinguisher close by in the case of fire and make sure you always have a designated "Fire Watch" to assist during the cutting or welding phases.

Abide by all apprenticed welding safety standards and practices.

Always use appropriate welding eye protection, ear protection, and work and fire safety gloves during the installation and within the work area.



WARNING!

If you are unsure on how to perform the installation or how to operate any of the required tools listed above, it is **HIGHLY** advised that you enlist the work of a certified welder/installer.

Failure to follow proper safety precautions and instructions may result in serious injury. **The user assumes all liability when installing the product.**



RUST BUSTER

RB7616

**Fuel Tank Support Bracket
1994-2004 Chevy/GMC S10/Sonoma**

3) PREPARING FOR YOUR INSTALL

Remove your vehicle's gas tank and strap and with a 15mm socket, remove the 4 bolts securing the factory fuel tank support bracket.



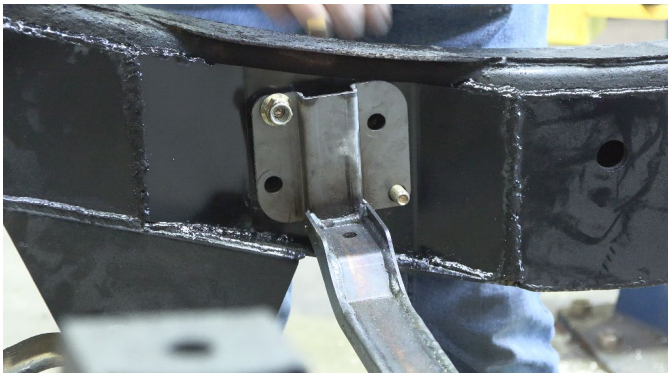
5) PAINT AND PROTECT

Coat the part and work area with a primer or other rust inhibitor to help prevent or reduce the risk of rust formation.



4) INSTALL

Raise the new part up to the frame, and with the included hardware, secure it using a 15 and 18 mm socket.



6) REINSTALL

Finally, reinstall your gas tank and strap.