



# RUST BUSTER

**RB7601L & RB7601R**  
**Rear Frame Section**  
**1994-2004 Chevy S10 &**  
**1994-2004 GMC Sonoma**



#### **REQUIRED TOOLS**

Jack Stands or Lift  
Mig Welder  
Paint/Primer  
Hand Grinder  
Cutting Wheel or Torch  
Welding Gloves  
Welding Hood/Shield  
Ear & Eye Protection  
Sockets & Ratchet  
Fire Extinguisher  
C-Clamps  
Paint Marker

#### **KIT CONTAINS**

Rear Frame Section

#### **QTY**

1



# RUST BUSTER

## RB7601L & RB7601R Rear Frame Section 1994-2004 Chevy S10 & 1994-2004 GMC Sonoma

### 1) PREPARING YOUR VEHICLE

Begin by disconnecting your battery prior to starting your installation.

Inspect your vehicle for leaking fuel lines, fuel tank and engine components. If you have fuel leaks repair all leaks prior to starting your installation. If your fuel tank is near your welding area **remove your tank prior to welding.**

Remove all combustible items above the work area such as seats, carpets, padding, etc.

**Keep all flammable materials away from the vehicle work area.**

### 2) PREPARING YOUR WORKSTATION

Keep a fire extinguisher close by in the case of fire and make sure you always have a designated "Fire Watch" to assist during the cutting or welding phases.

Abide by all apprenticed welding safety standards and practices.

Always use appropriate welding eye protection, ear protection, and work and fire safety gloves during the installation and within the work area.



### WARNING!

If you are unsure on how to perform the installation or how to operate any of the required tools listed above, it is **HIGHLY** advised that you enlist the work of a certified welder/installer.

Failure to follow proper safety precautions and instructions may result in serious injury. **The user assumes all liability when installing the product.**



# RUST BUSTER

## RB7601L & RB7601R Rear Frame Section 1994-2004 Chevy S10 & 1994-2004 GMC Sonoma

### 3) PREPARING FOR YOUR INSTALL

Lift up your vehicle. Remove any lines or power harnesses from the work area before continuing.

Using a socket, remove the nut and the bolt head with a 21mm socket to release the leaf spring and shackle.

### 4) CUT

Draw a line over the rear leaf spring shackle mount and cut along the line.



Grind the frame free of rust and debris, revealing bare metal.



Coat the part and work area with a weldable primer to help prevent against rust development.



Insert the leaf springs bushing according to the manufacturer's instructions.







# RUST BUSTER

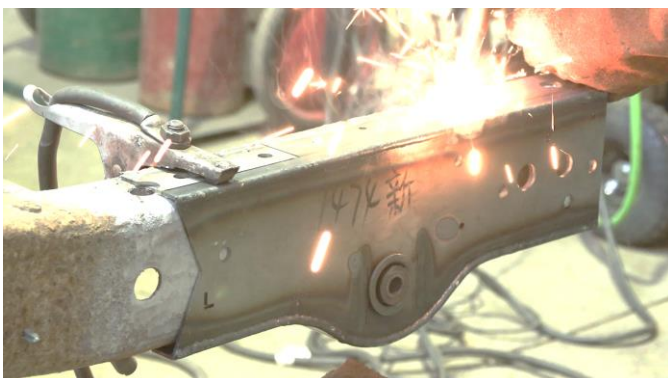
## RB7601L & RB7601R Rear Frame Section 1994-2004 Chevy S10 & 1994-2004 GMC Sonoma

### 5) **WELD**

Push the part into place using the frame holes to help with the alignment. We recommend using c-clamps to hold the part in place.



Following proper welding procedures, tack weld the part into place before welding it on fully. Weld 100% around all edges.



### 6) **REINSTALL**

Using a 21mm socket, reinstall your leaf spring and shackle.

### 7) **PAINT AND PROTECT**

Coat the part and work area with a primer or other rust inhibitor to help prevent or reduce the risk of rust formation.

