



RUST BUSTER

RB7422L & RB7422R
Front Center Frame Section
2007-2013 Chevy Avalanche, 2007-2014
Chevy Suburban/Tahoe, 2007-2014 GMC Yukon & Yukon XL,
2007-2013 Cadillac Escalade EXT, 2007-2014 Cadillac Escalade



VIDEO AVAILABLE



REQUIRED TOOLS

Jack Stands or Lift
Mig Welder
Paint/Primer
Hand Grinder
Cutting Wheel or Torch
Welding Gloves
Welding Hood/Shield
Ear & Eye Protection
Fire Extinguisher
Wrench
C-Clamp
Hammer

KIT CONTAINS

Front Center Frame Section

QTY

1



RUST BUSTER

RB7422L & RB7422R
Front Center Frame Section
2007-2013 Chevy Avalanche, 2007-2014
Chevy Suburban/Tahoe, 2007-2014 GMC Yukon & Yukon XL,
2007-2013 Cadillac Escalade EXT, 2007-2014 Cadillac Escalade

1) **PREPARING YOUR VEHICLE**

Begin by disconnecting your battery prior to starting your installation.

Inspect your vehicle for leaking fuel lines, fuel tank and engine components. If you have fuel leaks repair all leaks prior to starting your installation. If your fuel tank is near your welding area **remove your tank prior to welding.**

Remove all combustible items above the work area such as seats, carpets, padding, etc.

Keep all flammable materials away from the vehicle work area.

2) **PREPARING YOUR WORKSTATION**

Keep a fire extinguisher close by in the case of fire and make sure you always have a designated "Fire Watch" to assist during the cutting or welding phases.

Abide by all apprenticed welding safety standards and practices.

Always use appropriate welding eye protection, ear protection, and work and fire safety gloves during the installation and within the work area.



WARNING!

If you are unsure on how to perform the installation or how to operate any of the required tools listed above, it is **HIGHLY** advised that you enlist the work of a certified welder/installer.

Failure to follow proper safety precautions and instructions may result in serious injury. **The user assumes all liability when installing the product.**



RUST BUSTER

RB7422L & RB7422R
Front Center Frame Section
2007-2013 Chevy Avalanche, 2007-2014
Chevy Suburban/Tahoe, 2007-2014 GMC Yukon & Yukon XL,
2007-2013 Cadillac Escalade EXT, 2007-2014 Cadillac Escalade

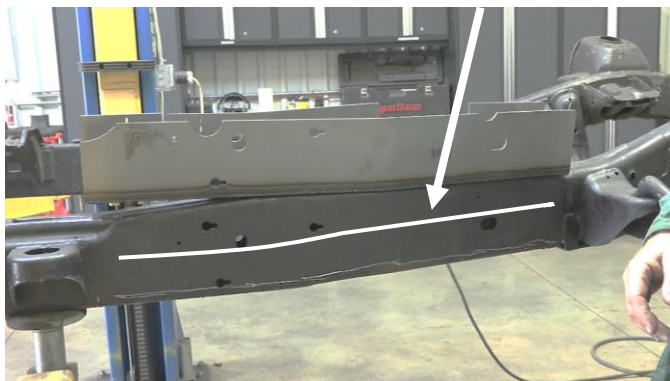
3) PREPARING FOR YOUR INSTALL

Lift up your vehicle. Remove any lines or power harnesses from the work area.

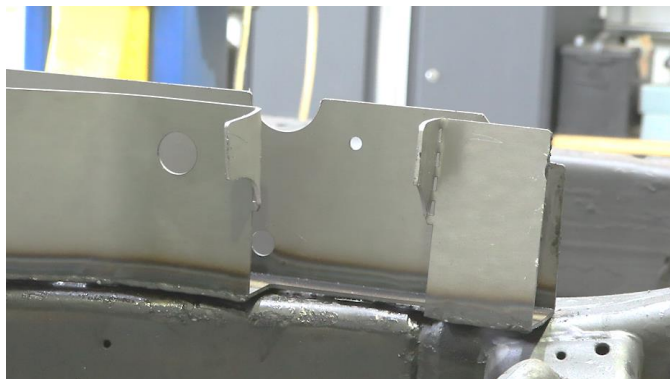
4) CUT

Hold your part up to the frame and mark off its coverage.

Using a paint marker, draw a line $\frac{3}{4}$ inch above the bottom of the frame and cut along it. You can cut the bottom section in half to make it easier to remove.



Our part features a perforated plate to fit over your existing crossmember. To do this, bend over the two plates. You may need to relieve the plates slightly to make them easier to bend over.



5) WELD

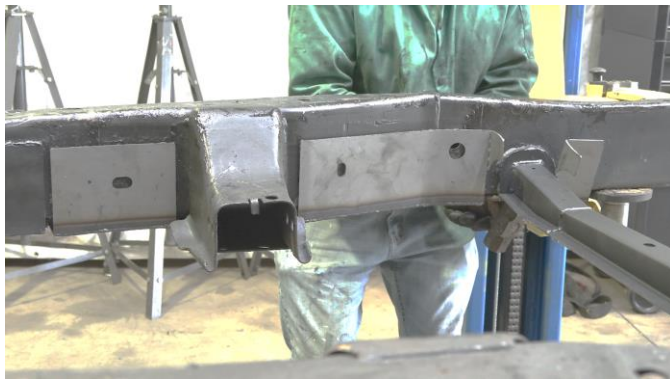
Slide the front center frame section onto the frame using a hammer to push it into place. Use the frame holes to help with the alignment.





RUST BUSTER

RB7422L & RB7422R
Front Center Frame Section
2007-2013 Chevy Avalanche, 2007-2014
Chevy Suburban/Tahoe, 2007-2014 GMC Yukon & Yukon XL,
2007-2013 Cadillac Escalade EXT, 2007-2014 Cadillac Escalade



Use a wrench to bend the plates against the frame located above the crossmember.

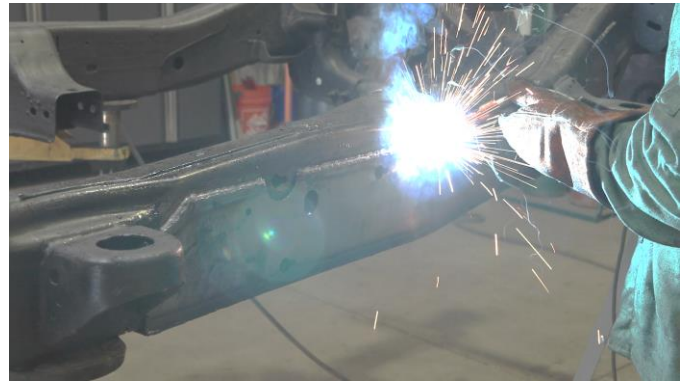
Following proper welding procedures, tack weld the front center frame section onto the frame.



C-clamp the part into place to ensure a tight fit.



Once in place, weld your part on fully. Weld 100% around all edges.





RUST BUSTER

RB7422L & RB7422R
Front Center Frame Section
2007-2013 Chevy Avalanche, 2007-2014
Chevy Suburban/Tahoe, 2007-2014 GMC Yukon & Yukon XL,
2007-2013 Cadillac Escalade EXT, 2007-2014 Cadillac Escalade

6) **PAINT AND PROTECT**

Paint the part with primer or other rust inhibitor to help prevent or reduce the risk of rust formation.

We recommend our Rust Buster Rust Converter & Primer Spray Paint (RB9917).

