



# RUST BUSTER

**RB7419**

**Spare Tire Crossmember**

**2007-2013 Chevy Avalanche, 2007-2014  
Chevy Suburban/Tahoe, 2007-2014 GMC Yukon & Yukon XL,  
2007-2013 Cadillac Escalade EXT, 2007-2014 Cadillac Escalade**



**VIDEO AVAILABLE**



## **REQUIRED TOOLS**

Jack Stands or Lift  
Mig Welder  
Paint/Primer  
Hand Grinder  
Cutting Wheel or Torch  
Welding Gloves  
Welding Hood/Shield  
Ear & Eye Protection  
Sockets & Ratchet  
Fire Extinguisher  
Hammer

## **KIT CONTAINS**

Spare Tire Crossmember

## **QTY**

1



# RUST BUSTER

**2007-2013 Chevy Avalanche, 2007-2014 Chevy Suburban/Tahoe, 2007-2014 GMC Yukon & Yukon XL, 2007-2013 Cadillac Escalade EXT, 2007-2014 Cadillac Escalade**

**RB7419**

**Spare Tire Crossmember**

## 1) **PREPARING YOUR VEHICLE**

Begin by disconnecting your battery prior to starting your installation.

Inspect your vehicle for leaking fuel lines, fuel tank and engine components. If you have fuel leaks repair all leaks prior to starting your installation. If your fuel tank is near your welding area **remove your tank prior to welding.**

Remove all combustible items above the work area such as seats, carpets, padding, etc.

**Keep all flammable materials away from the vehicle work area.**

## 2) **PREPARING YOUR WORKSTATION**

Keep a fire extinguisher close by in the case of fire and make sure you always have a designated "Fire Watch" to assist during the cutting or welding phases.

Abide by all apprenticed welding safety standards and practices.

Always use appropriate welding eye protection, ear protection, and work and fire safety gloves during the installation and within the work area.



**WARNING!**

If you are unsure on how to perform the installation or how to operate any of the required tools listed above, it is **HIGHLY** advised that you enlist the work of a certified welder/installer.

Failure to follow proper safety precautions and instructions may result in serious injury. **The user assumes all liability when installing the product.**



# RUST BUSTER

**RB7419**

## Spare Tire Crossmember

**2007-2013 Chevy Avalanche, 2007-2014 Chevy Suburban/Tahoe, 2007-2014 GMC Yukon & Yukon XL, 2007-2013 Cadillac Escalade EXT, 2007-2014 Cadillac Escalade**

### 3) **PREPARING FOR YOUR INSTALL**

Lift up your vehicle. Remove any lines or power harnesses from the work area.

Grind the frame free of rust and debris, revealing bare metal.

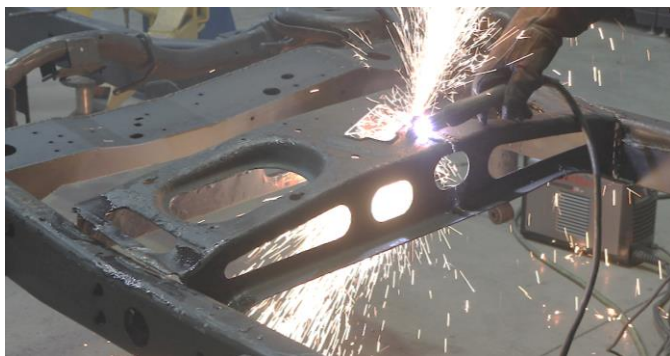
### 4) **CUT**

Cut out the factory spare tire crossmember. You can cut the crossmember in half to make it easier to remove.



Paint the work area with a weld through primer to help prevent against rust development.

Your frame may have some extra thickness where your spare tire crossmember will sit. You may need to grind down both ends of your crossmember to ensure a guaranteed fit.







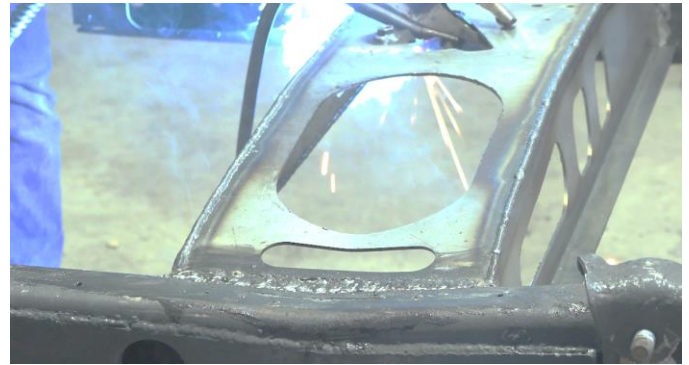
# RUST BUSTER

**RB7419**

**Spare Tire Crossmember**

**2007-2013 Chevy Avalanche, 2007-2014 Chevy Suburban/Tahoe, 2007-2014 GMC Yukon & Yukon XL, 2007-2013 Cadillac Escalade EXT, 2007-2014 Cadillac Escalade**

Tap your part into place using a hammer.



**6) PAINT AND PROTECT**

Paint the part with primer or other rust inhibitor to help prevent or reduce the risk of rust formation.

We recommend our Rust Buster Rust Converter & Primer Spray Paint (RB9917).



**5) WELD**

Following proper welding procedures, tack weld your spare tire crossmember to the frame before welding the part on fully. Weld 100% around all edges.

