



RUST BUSTER

RB7357L & RB7357R
Front Frame Section
1973-1987 Chevy K10 & K20



REQUIRED TOOLS

Jack Stands or Lift
Mig Welder
Paint/Primer
Hand Grinder
Cutting Wheel or Torch
Welding Gloves
Welding Hood/Shield
Ear & Eye Protection
Sockets & Ratchet
Fire Extinguisher
Wrench
Hammer

KIT CONTAINS

Front Frame Section

QTY

1



RUST BUSTER

RB7357L & RB7357R Front Frame Section 1973-1987 Chevy K10 & K20

1) PREPARING YOUR VEHICLE

Begin by disconnecting your battery prior to starting your installation.

Inspect your vehicle for leaking fuel lines, fuel tank and engine components. If you have fuel leaks repair all leaks prior to starting your installation. If your fuel tank is near your welding area **remove your tank prior to welding.**

Remove all combustible items above the work area such as seats, carpets, padding, etc.

Keep all flammable materials away from the vehicle work area.

2) PREPARING YOUR WORKSTATION

Keep a fire extinguisher close by in the case of fire and make sure you always have a designated "Fire Watch" to assist during the cutting or welding phases.

Abide by all apprenticed welding safety standards and practices.

Always use appropriate welding eye protection, ear protection, and work and fire safety gloves during the installation and within the work area.



WARNING!

If you are unsure on how to perform the installation or how to operate any of the required tools listed above, it is **HIGHLY** advised that you enlist the work of a certified welder/installer.

Failure to follow proper safety precautions and instructions may result in serious injury. **The user assumes all liability when installing the product.**



RUST BUSTER

RB7357L & RB7357R Front Frame Section 1973-1987 Chevy K10 & K20

3) PREPARING FOR YOUR INSTALL

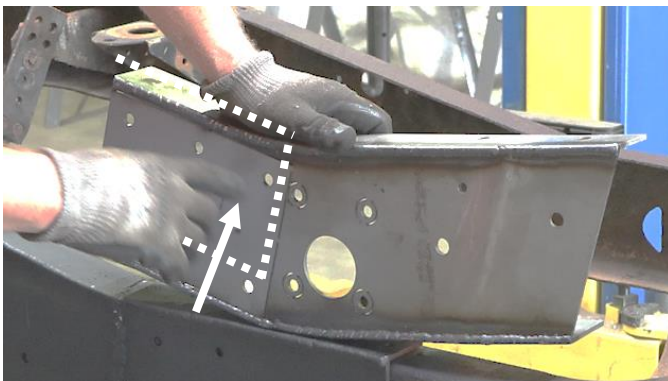
Lift up your vehicle.

Unbolt the shackle bolts using an 11/16" socket and a 5/8" wrench.

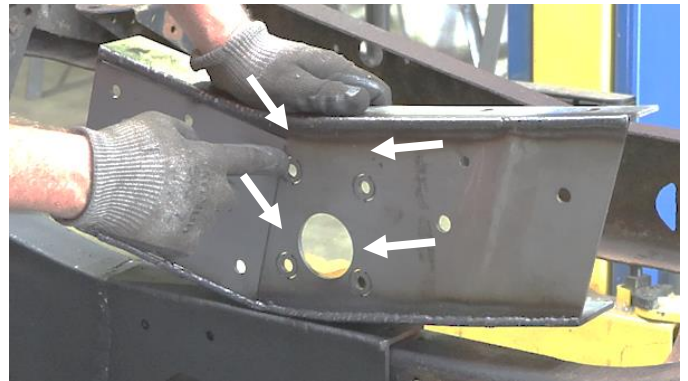


4) CUT

Our part features a perforated plate that can be removed to fit over your existing body mount. If you decide to keep your body mount, remove the plate at this time.



Our part also features 4 small perforated plates that you can remove to fit over any existing rivets you may have on your frame.



Spray the work area with a weldable primer to help prevent against rust development.



RUST BUSTER

RB7357L & RB7357R Front Frame Section 1973-1987 Chevy K10 & K20

5) **WELD**

Slide the part onto the frame using the frame holes to help with the alignment. Use a hammer to push it into place.



With a 15mm socket and 14mm wrench, screw in the bolts and nuts, holding the front cab mount in place.



Following proper welding procedures, tack weld the front end of your frame section onto the frame, leaving the side with your body mount loose.



Once secure, tighten the bolts, ensuring a tight fit.



Weld the part on fully. 100% around all edges.





RUST BUSTER

RB7357L & RB7357R Front Frame Section 1973-1987 Chevy K10 & K20

6) **REINSTALL**

Reinstall your shackle using an 11/16" socket and a 5/8" wrench.



7) **PAINT**

Paint the part with primer or other rust inhibitor to help prevent or reduce the risk of rust formation.

We recommend our Rust Buster Rust Converter & Primer Spray Paint (RB9917).

