

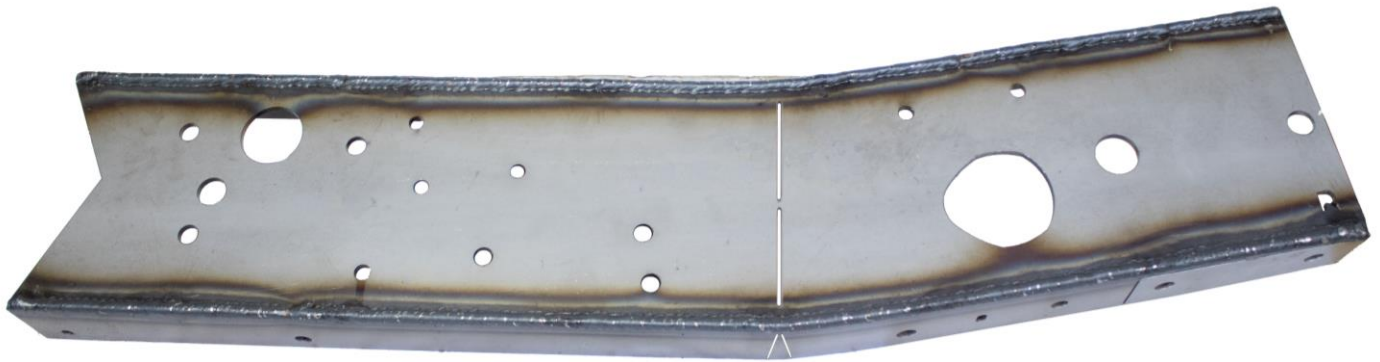


RUST BUSTER

RB7356L & RB7356R Center Forward Frame Section 1973-1987 Chevy K10 & K20



VIDEO AVAILABLE



REQUIRED TOOLS

Jack Stands or Lift
Mig Welder
Paint/Primer
Hand Grinder
Cutting Wheel or Torch
Welding Gloves
Welding Hood/Shield
Ear & Eye Protection
Sockets & Ratchet
Fire Extinguisher
Wrench
Hammer

KIT CONTAINS

Center Forward Frame Section

QTY

1



RUST BUSTER

RB7356L & RB7356R Center Forward Frame Section 1973-1987 Chevy K10 & K20

1) **PREPARING YOUR VEHICLE**

Begin by disconnecting your battery prior to starting your installation.

Inspect your vehicle for leaking fuel lines, fuel tank and engine components. If you have fuel leaks repair all leaks prior to starting your installation. If your fuel tank is near your welding area **remove your tank prior to welding.**

Remove all combustible items above the work area such as seats, carpets, padding, etc.

Keep all flammable materials away from the vehicle work area.

2) **PREPARING YOUR WORKSTATION**

Keep a fire extinguisher close by in the case of fire and make sure you always have a designated "Fire Watch" to assist during the cutting or welding phases.

Abide by all apprenticed welding safety standards and practices.

Always use appropriate welding eye protection, ear protection, and work and fire safety gloves during the installation and within the work area.



WARNING!

If you are unsure on how to perform the installation or how to operate any of the required tools listed above, it is **HIGHLY** advised that you enlist the work of a certified welder/installer.

Failure to follow proper safety precautions and instructions may result in serious injury. **The user assumes all liability when installing the product.**



RUST BUSTER

RB7356L & RB7356R Center Forward Frame Section 1973-1987 Chevy K10 & K20

3) PREPARING FOR YOUR INSTALL

Lift up your vehicle.

With a 12mm socket, remove the clips located on the inner part on the frame.

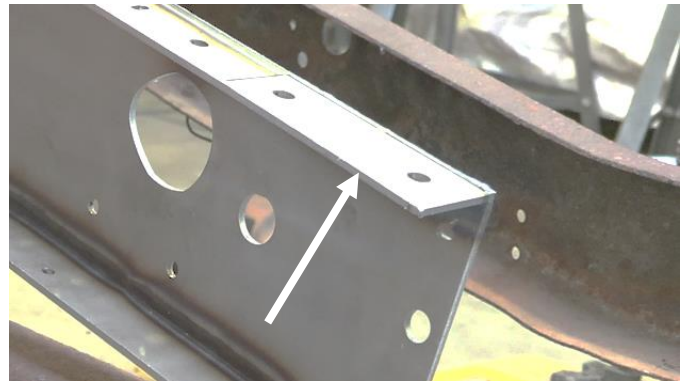


With a 15mm socket, remove the brake line bracket.

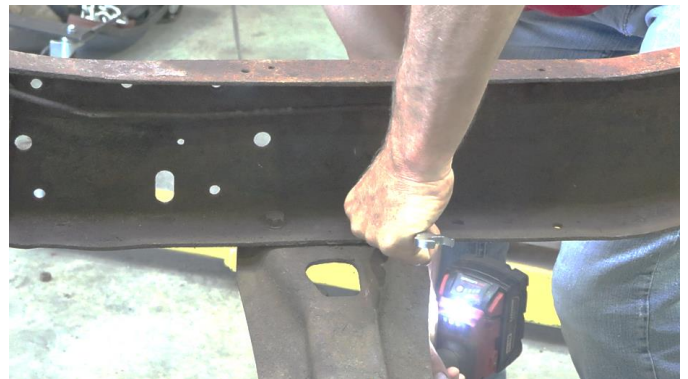


4) CUT

On the bottom on your center forward frame section, our part features a perforated plate to fit over the end of the transmission crossmember. If you choose to remove this plate, do it now.



If you decide not to remove this plate, use a 16mm socket and wrench to remove the bolts retaining the transmission crossmember.



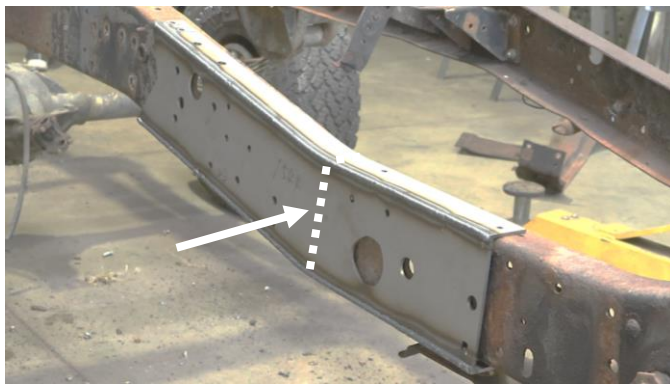


RUST BUSTER

RB7356L & RB7356R Center Forward Frame Section 1973-1987 Chevy K10 & K20

Spray the work area with a weldable primer to help prevent against rust development.

Due to the frame rail not being completely straight, our part features a perforation you can cut on your frame section that allows you to meet bend on your frame.



Slide the part onto the frame using the frame holes to help with the alignment. Use a hammer to push it into place.



Once in place, reinstall your transmission crossmember using a 16mm socket.





RUST BUSTER

RB7356L & RB7356R Center Forward Frame Section 1973-1987 Chevy K10 & K20

5) **WELD**

Following proper welding procedures, tack weld the center forward frame section into place before welding the part on fully. Weld 100% around all edges.



6) **PAINT**

Paint the part with primer or other rust inhibitor to help prevent or reduce the risk of rust formation.

We recommend our Rust Buster Rust Converter & Primer Spray Paint (RB9917).



7) **REINSTALL**

Reinstall the brake line bracket using a 15mm socket, clips with a 12mm socket, and your transmission.