



RUST BUSTER

RB7354R
Leaf Spring Frame Section
1973-1987 Chevy K10 & K20 – Standard Cab 8 ft. Bed



VIDEO AVAILABLE



REQUIRED TOOLS

Jack Stands or Lift
Mig Welder
Paint/Primer
Hand Grinder
Cutting Wheel or Torch
Welding Gloves
Welding Hood/Shield
Ear & Eye Protection
Sockets & Wrench
Fire Extinguisher
C-Clamps
Hammer
Punch

KIT CONTAINS

Leaf Spring Frame Section
Support Plate
M10 Flanged Hex Screw
M10 Flange Locknut

QTY

1
1
10
10



RUST BUSTER

1973-1987 Chevy K10 & K20 – Standard Cab 8 ft. Bed

RB7354R

Leaf Spring Frame Section

1) PREPARING YOUR VEHICLE

Begin by disconnecting your battery prior to starting your installation.

Inspect your vehicle for leaking fuel lines, fuel tank and engine components. If you have fuel leaks repair all leaks prior to starting your installation. If your fuel tank is near your welding area **remove your tank prior to welding.**

Remove all combustible items above the work area such as seats, carpets, padding, etc.

Keep all flammable materials away from the vehicle work area.

2) PREPARING YOUR WORKSTATION

Keep a fire extinguisher close by in the case of fire and make sure you always have a designated "Fire Watch" to assist during the cutting or welding phases.

Abide by all apprenticed welding safety standards and practices.

Always use appropriate welding eye protection, ear protection, and work and fire safety gloves during the installation and within the work area.



WARNING!

If you are unsure on how to perform the installation or how to operate any of the required tools listed above, it is **HIGHLY** advised that you enlist the work of a certified welder/installer.

Failure to follow proper safety precautions and instructions may result in serious injury. **The user assumes all liability when installing the product.**



RUST BUSTER

RB7354R Leaf Spring Frame Section 1973-1987 Chevy K10 & K20 – Standard Cab 8 ft. Bed

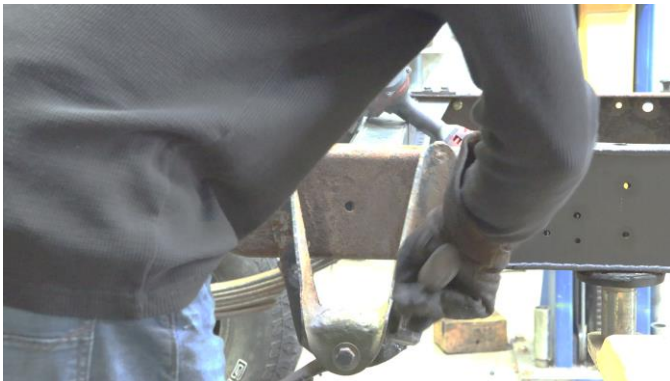
3) PREPARING FOR YOUR INSTALL

Lift up your vehicle. Remove any lines or power harnesses in your work area.

Using a 14mm socket and 15mm wrench, remove the bolts retaining the leaf spring hanger and center frame crossmember (if you have our part RB7363).

4) CUT (FOR FWD & HEAVY-DUTY VEHICLES ONLY)

The bracket located on the back of your leaf spring hanger is made for 4WD and heavy-duty suspensions. Due to there being extra material on the bottom of your frame section, the holes will not line up. We will need to remove the four rivets retaining the lower bracket on your leaf spring hanger. Set your bracket aside.



Our part features eight perforated plates on the top and bottom of your frame section to fit over the rivets retaining the factory center frame crossmember. If you decide to keep your rivets, cut out the perforated plates.

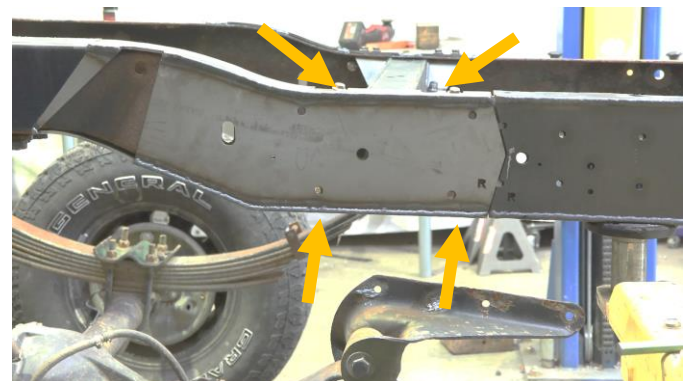


Grind the frame free of rust and debris, revealing bare metal.

Spray the work area with a weldable primer to help prevent against rust development.

Slide your leaf spring frame section onto the frame and tap it into place using the frame holes to help with the alignment.

If you installed our center frame crossmember (RB7363), use a 14mm socket and 15mm wrench to install the eight bolts on the top and bottom of your frame rail to hold your crossmember and leaf spring frame section in place.





RUST BUSTER

RB7354R Leaf Spring Frame Section 1973-1987 Chevy K10 & K20 – Standard Cab 8 ft. Bed

5) WELD

After screwing in the included hardware, c-clamp your part into place if needed.

Hold your support plate up to the frame making sure it's a good fit.



Following proper welding procedures, tack weld your leaf spring frame section and support plate onto the frame.



Once in place, weld the parts on fully. Weld 100% around all edges.



6) REINSTALL

Hold your leaf spring hanger up to the frame and install the four included bolts and nuts on the top of your leaf spring hanger.



FOR FWD & HEAVY-DUTY VEHICLES ONLY:

Now with your leaf spring hanger in place, take your leaf spring bracket and screw in two of the included bolts with a 14mm socket and 15mm wrench.



RUST BUSTER

RB7354R Leaf Spring Frame Section 1973-1987 Chevy K10 & K20 – Standard Cab 8 ft. Bed

To align the leaf spring hanger with the bracket, we will need to make some slight adjustments. To do this, we recommend lining up the bracket and leaf spring hangers' holes to the best of your ability. Then, using a torch, burn your way through the holes so the bolts will align properly.

Once aligned, screw in the remaining hardware retaining your leaf spring hanger and bracket with a 14mm socket and 15mm wrench.

7) PAINT

Paint the part with primer or other rust inhibitor to help prevent or reduce the risk of rust formation.

We recommend our Rust Buster Rust Converter & Primer Spray Paint (RB9917).

