

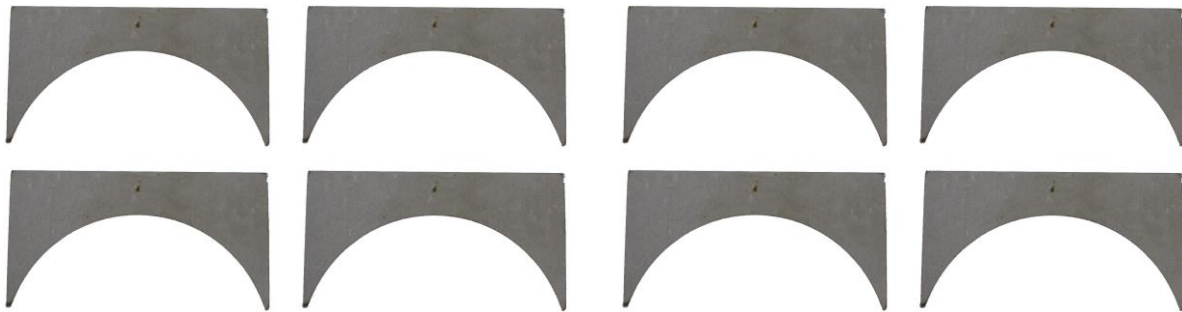


# RUST BUSTER

## RB7350 Tube Style Rear Frame Crossmember 1999-2006 Chevy Silverado & GMC Sierra 1500



VIDEO AVAILABLE



### REQUIRED TOOLS

Jack Stands or Lift  
Mig Welder  
Paint/Primer  
Hand Grinder  
Cutting Wheel or Torch  
Welding Gloves  
Welding Hood/Shield  
Ear & Eye Protection  
Fire Extinguisher  
Paint Marker

### KIT CONTAINS

Tube Style Rear Frame Crossmember  
Support Plates

### QTY

1  
8



# RUST BUSTER

**RB7350**

## Tube Style Rear Frame Crossmember 1999-2006 Chevy Silverado & GMC Sierra 1500

### 1) **PREPARING YOUR VEHICLE**

Begin by disconnecting your battery prior to starting your installation.

Inspect your vehicle for leaking fuel lines, fuel tank and engine components. If you have fuel leaks repair all leaks prior to starting your installation. If your fuel tank is near your welding area **remove your tank prior to welding.**

Remove all combustible items above the work area such as seats, carpets, padding, etc.

**Keep all flammable materials away from the vehicle work area.**

### 2) **PREPARING YOUR WORKSTATION**

Keep a fire extinguisher close by in the case of fire and make sure you always have a designated "Fire Watch" to assist during the cutting or welding phases.

Abide by all apprenticed welding safety standards and practices.

Always use appropriate welding eye protection, ear protection, and work and fire safety gloves during the installation and within the work area.



**WARNING!**

If you are unsure on how to perform the installation or how to operate any of the required tools listed above, it is **HIGHLY** advised that you enlist the work of a certified welder/installer.

Failure to follow proper safety precautions and instructions may result in serious injury. **The user assumes all liability when installing the product.**



# RUST BUSTER

## RB7350 Tube Style Rear Frame Crossmember 1999-2006 Chevy Silverado & GMC Sierra 1500

### 3) PREPARING FOR YOUR INSTALL

Lift up your vehicle. Remove any lines or power harnesses from the work area.

You can cut the crossmember into three pieces to make it easier to remove.

### 4) CUT

Relieve the welds on each end of the factory tube style rear frame crossmember, making sure to go around the brackets holding the crossmember in place.



Relieve the welds between the spare tire plate and the crossmember.



Grind the frame free of rust and debris, revealing bare metal.







# RUST BUSTER

## RB7350 Tube Style Rear Frame Crossmember 1999-2006 Chevy Silverado & GMC Sierra 1500



Spray the work area with a weldable primer to help prevent against rust development.

### 5) **WELD**

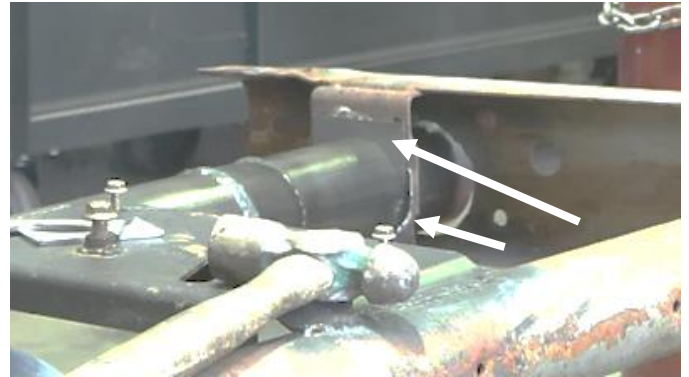
Slide your tube style rear frame crossmember into place, one side at a time.



Following proper welding procedures, tack weld the crossmember to the spare tire plate before welding it on fully.



Our part features eight support plates to fit on the top and bottom of your inner brackets located on each end of your crossmember. Hold the plates up to the frame and tack them into place.



Once in place, finish welding around the support plates followed by welding your crossmember into place. Weld 100% around all edges.





# RUST BUSTER

## RB7350 Tube Style Rear Frame Crossmember 1999-2006 Chevy Silverado & GMC Sierra 1500

### 6) **PAINT**

Paint the part with primer or other rust inhibitor to help prevent or reduce the risk of rust formation.

We recommend our Rust Buster Rust Converter & Primer Spray Paint (RB9917).

