



RUST BUSTER

RB7122
Front Cab Mount
1995-2004 Toyota Tacoma



VIDEO AVAILABLE



REQUIRED TOOLS

Jack Stands or Lift
Mig Welder
Paint/Primer
Hand Grinder
Cutting Wheel or Torch
Welding Gloves
Welding Hood/Shield
Ear & Eye Protection
Sockets & Ratchet
Fire Extinguisher
Paint Marker

KIT CONTAINS

Front Cab Mount
M10 Flanged Hex Screw

QTY

1
2



RUST BUSTER

RB7122 Front Cab Mount 1995-2004 Toyota Tacoma

1) **PREPARING YOUR VEHICLE**

Begin by disconnecting your battery prior to starting your installation.

Inspect your vehicle for leaking fuel lines, fuel tank and engine components. If you have fuel leaks repair all leaks prior to starting your installation. If your fuel tank is near your welding area **remove your tank prior to welding.**

Remove all combustible items above the work area such as seats, carpets, padding, etc.

Keep all flammable materials away from the vehicle work area.

2) **PREPARING YOUR WORKSTATION**

Keep a fire extinguisher close by in the case of fire and make sure you always have a designated "Fire Watch" to assist during the cutting or welding phases.

Abide by all apprenticed welding safety standards and practices.

Always use appropriate welding eye protection, ear protection, and work and fire safety gloves during the installation and within the work area.



WARNING!

If you are unsure on how to perform the installation or how to operate any of the required tools listed above, it is **HIGHLY** advised that you enlist the work of a certified welder/installer.

Failure to follow proper safety precautions and instructions may result in serious injury. **The user assumes all liability when installing the product.**



RUST BUSTER

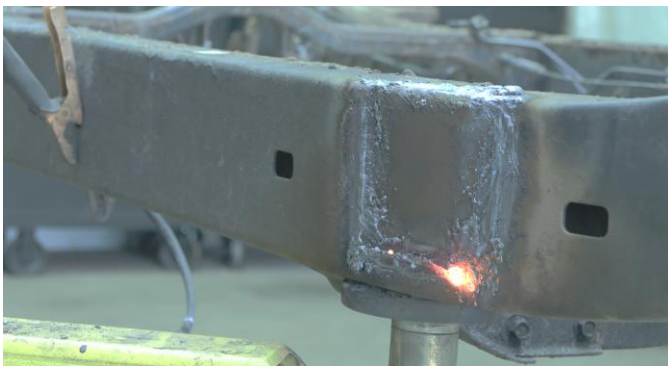
RB7122 Front Cab Mount 1995-2004 Toyota Tacoma

3) PREPARING FOR YOUR INSTALL

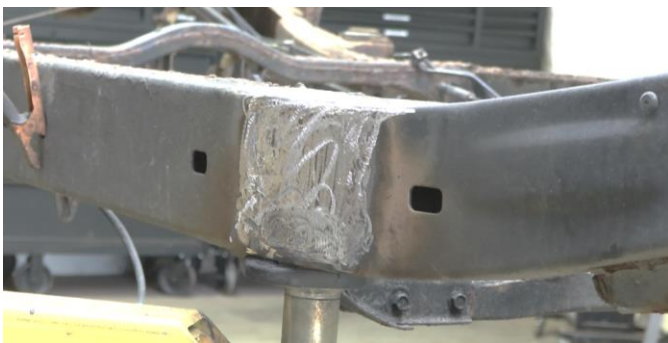
Jack up your vehicle. Remove your body mount bolt and bushing.

4) CUT

Cut off the factory front cab mount.



Grind the frame free of rust and debris revealing bare metal.

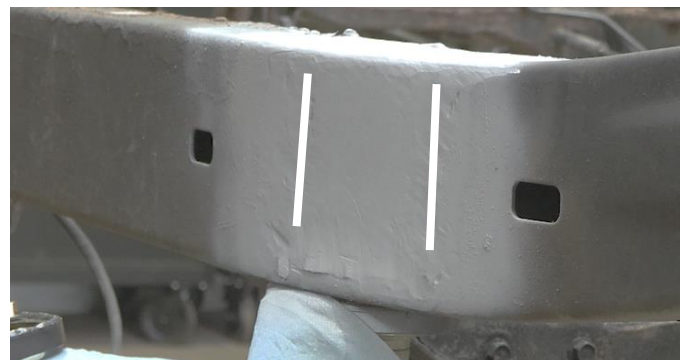


Spray the work area with a weld through primer to help prevent or reduce the risk of rust formation.



5) WELD

Using the silhouette where the factory body mount was originally located, hold the part up to the frame and mark off its coverage using a paint marker.

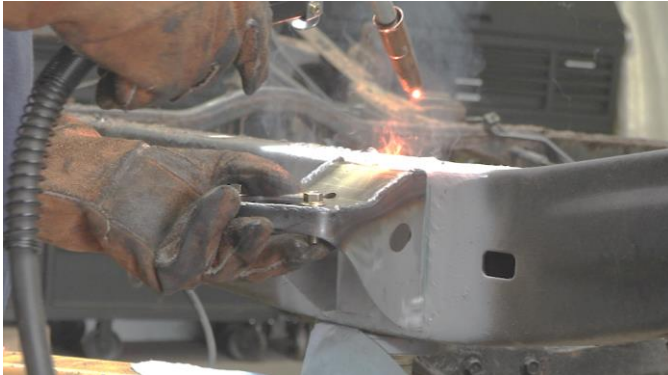




RUST BUSTER

RB7122 Front Cab Mount 1995-2004 Toyota Tacoma

Following proper welding procedures, tack weld the front cab mount into place before welding the part on fully. Weld 100% around all edges.



6) **PAINT**

Paint the part with a primer or other rust inhibitor to help prevent or reduce the risk of rust formation.

We recommend our Rust Buster Rust Converter & Primer Spray Paint (RB9917).



7) **REINSTALL**

Using a 13mm socket, reinstall your body mount bolt and bushing.

